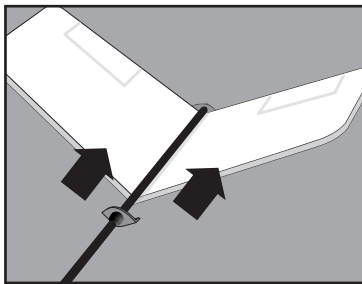
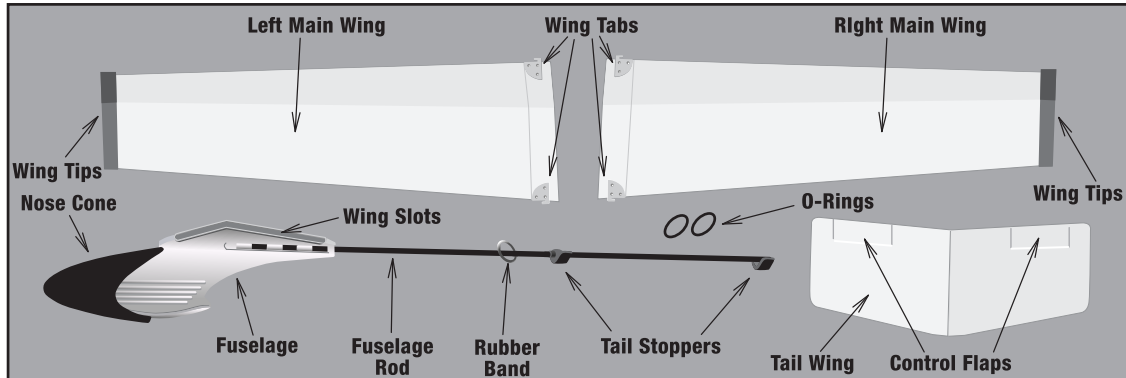


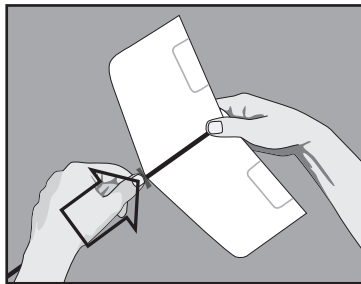
X-TREME WINGS™ 30"

ASSEMBLY INSTRUCTIONS

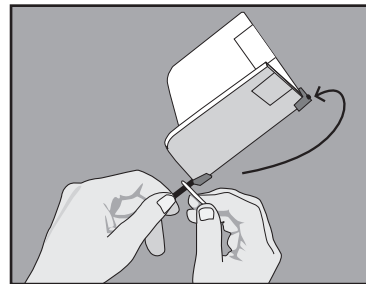
SIMPLE TO PUT TOGETHER



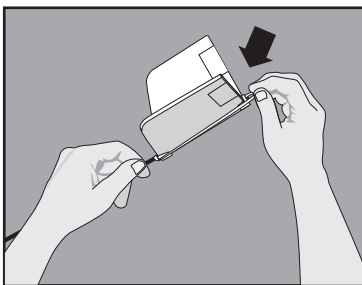
1. Insert Tail Wing under Fuselage Rod and into Rear Tail Stopper with art side up.



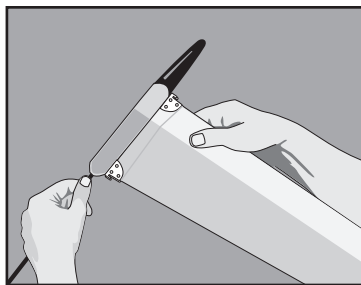
2. Slide the Front Tail Stopper under the front of the Tail Wing, securing it in place.



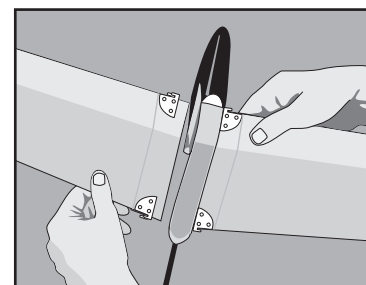
3. Pull the Rubber Band on the Fuselage Rod under the Tail Wing.



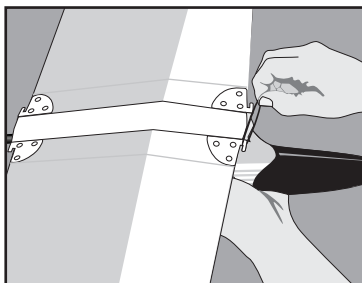
4. Secure Rubber Band over the end of the Rear Tail Stopper.



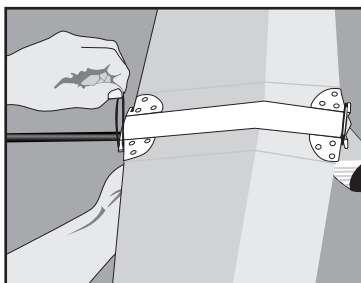
5. Insert the Right Main Wing into the Wing Slots on the Fuselage. Wings should be placed so the bend of the wing corresponds with the bend of the slot.



6. Repeat for Left Main Wing.



7. Pull an O-Ring over the hooks on the forward Wing Tabs to firmly secure the front of the Wings.



8. Use a second O-Ring to secure the rear of the Wings

